

Tactical flashlight for expandable baton BL-03 | User instructions

The **BL-03** flashlight in combination with ESP baton present a highly practical set for service, rescue and self-defense purposes. The flashlight can be used separately as well (without the expandable baton) as a common **pocket flashlight**. It will become your reliable and **highly resistant** source of light not only on duty, but also during all your outdoor activities or just during an evening stroll in the city.

Experts from the armed forces have participated in the development of this flashlight. The result is a product which meets the highest requirements of use on duty:

- **Performance** – The innovative **Cree LED chip** with **5W** performance ensures the luminosity of up to **350 lm**.
- **Impact resistance** – The flashlight can withstand strong shocks of the baton being used thanks to the durable duraluminum body and the polycarbonate front glass.
- **Water-tightness** – Rubber isolation in critical places allows not only for **short immersion** of the flashlight in shallow water, but also for prolonged use of the flashlight during heavy rain.

Carefully read this instruction manual before using the flashlight!

1. Charging the flashlight

- The flashlight can be powered by:
 - 1 pc of **rechargeable 18350** type battery (voltage 3,7 V) – see image 1b
 - 1 pc of **non-rechargeable battery CR 123A** (voltage 3 V) – see image 1a
- Battery of the type CR 123A has a smaller diameter and therefore **must be used with the plastic insert E** (see image 1a). The insert is **placed in the battery space** of the flashlight. If you want to use the flashlight with the rechargeable battery 18350, please take out this plastic insert and save it for future use.

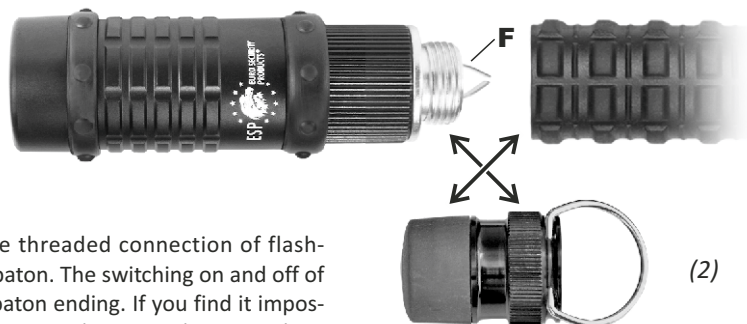


2. Battery insertion and replacement

- First loosen and unscrew the front part of the flashlight **A** from the middle part **B**. Place the battery's **negative terminal (-)** into the cylindrical metal insert **D**, as shown on images 1a and 1b. Then place the metal insert **D** into the middle part **B**. Screw the front part **A** back onto middle part **B** and carefully tighten it, using appropriately moderate force.
- When inserting the battery, be careful to observe its polarity (+) and (-). Be also careful not to loose the metal insert **D** which is essential for the flashlight's functionality.

3. Attaching the flashlight to ESP expandable baton

- First unscrew the end part **C** of the BL-03 flashlight and the ending of the baton grip. Then you can screw the flashlight onto the expandable baton.
- Screw the flashlight end part **C** and the baton ending together and **put them in a safe place** to prevent their loss. See image 2.
- **ATTENTION!** Be careful to properly (but with moderate force) tighten the threaded connection of flashlight parts **A** and **B** as well as the connection between the flashlight and the baton. The switching on and off of the flashlight is possible only when the flashlight is **tightened firmly** to the baton ending. If you find it impossible to tighten both parts precisely, please check if the threads on the connection between them are clean and try again.
- If there are problems expanding the baton (if it is too easy or too difficult) when the flashlight is attached, it is necessary to **adjust the metal spring F** with the use of small pliers. You can find the instructions for that on the reverse side of this page.
- If you want to use the flashlight separately from the expandable baton again, unscrew it from the baton handle and replace the end part **C** of the flashlight. It is necessary to carefully (but with moderate force) tighten the threads between parts **A**, **B** and **C** to ensure full functionality of the flashlight.



4. Operating the flashlight

- To switch the flashlight on, firmly hold the middle part **B** of the flashlight in the area of the rubber ring and turn it against the expandable baton or the flashlight end part **C**.
- **ATTENTION!** If you are unable to switch the flashlight on in this manner, try to carefully (but with appropriate force) **tighten the thread** between parts **A** and **B**. Also tighten the thread between the whole flashlight and the baton or the thread of the end part **C**. Check the polarity and the battery status. In case of need, replace the battery with a new one (see paragraph 2 for instructions). If the problem persists, please contact the seller or manufacturer.
- The flashlight can be switched off by turning the middle part **B** in a direction opposite to the way it is switched on.
- The flashlight is equipped with an electronic module, which enables **4 modes of lighting**:
 - **100 %**
 - **stroboscope**
 - **50 %**
 - **10 %**
- The stroboscope is the second mode in line so that it can be readily used to disorient the opponent in a defensive situation or to daze the perpetrator during a night police intervention.
- You can **select the desired mode** by quickly turning the body of the flashlight several times when switching the flashlight on. If you switch the flashlight off for more than 2 seconds, it defaults to switching on in the 100% performance mode.

5. Flashlight maintenance

- The ESP flashlight requires only low maintenance thanks to its high durability. Still, it is recommended to perform an occasional functional check of the contact springs, threads and the isolation. If moisture enters the inside of the flashlight (possible only when the special isolation is damaged), it is necessary to dry the inside of the flashlight and clean the metal contacts.
- For comfortable carrying of the flashlight, we recommend the purchase of the nylon holder with metal clip **BLH-02**. We also offer red signal cone **BRC-01** for this flashlight which can be used to pull over vehicles during police checks and so on.



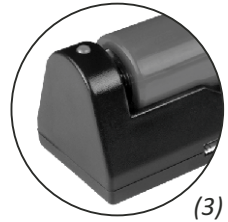
BLH-02

6. Warning

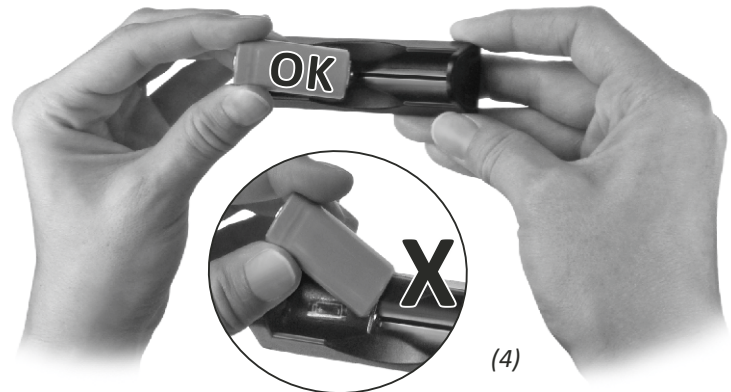
- This is not a toy for children. Do not shine directly into the eyes! If batteries or small parts are swallowed, see a doctor immediately. Do not throw out the used batteries as house garbage. The used batteries can be sent to the recycling station, the special waste collection depot or your dealer.

7. Operating the charging adapter

- The compact charging adapter FLBC-01, which is supplied with BL-03 flashlight, can charge batteries of the type **18350** used to power the flashlight. This adapter can also charge another type of batteries – **18650** (used to power other types of ESP flashlights).
- The LED on the adapter (*see image 3*) **signals its status**:
 - red color = battery is being charged,
 - green color = battery is fully charged / the adapter is plugged in (standby mode).
- Connect the charging adapter to a regular smartphone charger (**micro USB** connection). The adapter can also be connected to a PC or laptop with the enclosed USB cable. The battery should be inserted **in line with the adapter**, as shown in *image 4*.
- Remove the battery from adapter in the upward direction. Always hold the adapter with the other hand when inserting or removing batteries to keep it stable.



(3)



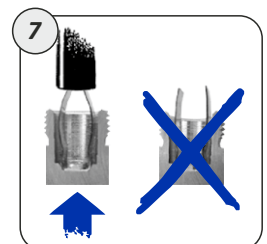
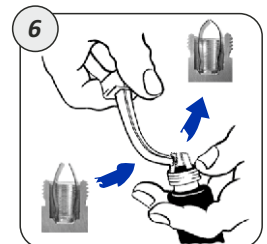
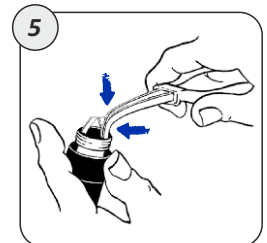
(4)

8. Safety instructions for use of the charging adapter

- Use **ONLY** rechargeable batteries 18350 or 18650. Other types of batteries may cause personal injury or damage. The adapter cannot charge multiple batteries simultaneously. Be careful to insert the batteries correctly according to their polarity (+) and (-).
- Do not cover the adapter during charging and always leave it in a space where it can cool off. Ensure there is sufficient air flow around the adapter – the battery heats up when it is charged. Do not disassemble the adapter and keep it dry.

9. Adjusting the spring – pressure which holds the baton open

- The security spring is adjusted by the manufacturer to an optimal pressure needed for opening the baton. This pressure ensures also the strength of hold of the baton in the closed and also in the open position. It is, however, possible to adjust the spring pressure according to the individual needs of the user.
- **The lower spring pressure** enables easier opening of the baton and also its easier closing, since the cone endings of expandable tubes hold together less firmly. In an extreme situation, too low spring pressure could hinder the use of the baton, as the baton will not hold in the closed position and it is also possible that it doesn't hold properly in the open position.
- **If the spring pressure is higher**, the baton has to be open with a stronger flick. The baton holds strongly in the open position as the cone endings of the expandable tubes are locked more tightly. In an extreme situation, too high spring pressure could hinder the use of the baton, as it is more difficult to open the baton (or to open it at all) and it is more difficult to close it.
- For adjusting the spring pressure it is necessary to use the needle-nose bent pliers.
 - **For reduction of the spring pressure** push slightly both leaves of spring together (*see image 5*). Points of pliers must be inserted between the baton spring guide cap side and spring leaf.
 - **For increase of the spring pressure** bend both spring leaves so that they are in the top part more curved (*see image 6*).
- When reducing or increasing the spring pressure it is necessary to be careful and make just small changes. After any change of the spring shape you must try whether the required pressure was attained. If not – repeat previous steps.
- After setting the resistance of the spring, check carefully that the tips fit closely together and that they are symmetrical. Otherwise the spring tips may be broken when closing the baton – they may hit the inside wall of the baton tube (*see image 7*).



10. Warranty terms

- The manufacturer reserves the right to evaluate the legitimacy of the application of the warranty claim. The decisive factor in accepting the claim is the correct use of the flashlight according to these instructions.
- A warranty of **2 years** from the date of purchase is provided for this flashlight free of charge. **The warranty is not applicable** to regular wear or scratching of the metal surfaces, heavy damage caused by the impact of hard objects (stone, concrete, steel) and damage caused by hard mechanical force or prying.
- The manufacturer bears no responsibility for possible secondary damages caused by incorrect use of the flashlight or by use that is not in accordance with these instructions.

